

## How to Install Knoll 3.0

Following are instructions for installing Knoll Light Factory on Windows or Macintosh. Please note that your installer is not cross-platform; it will either work on the PC or the Mac. Purchase of each platform is separate. Registration occurs upon purchase of Primatte. Therefore, no additional steps need to be taken to register the product.

### Installation: Mac OS X

Knoll Light Factory 3.0 is supported on Mac OS X, all variants, and runs natively on Intel Macs. We do not support OS 9.0 for this product.

Knoll 3.0 works in Adobe Photoshop 5.5 +higher, including Photoshop CS3. It is also compatible with Photoshop Elements 2.0 +higher, including Elements 5.0.

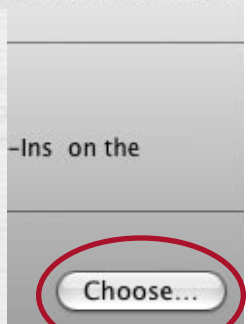
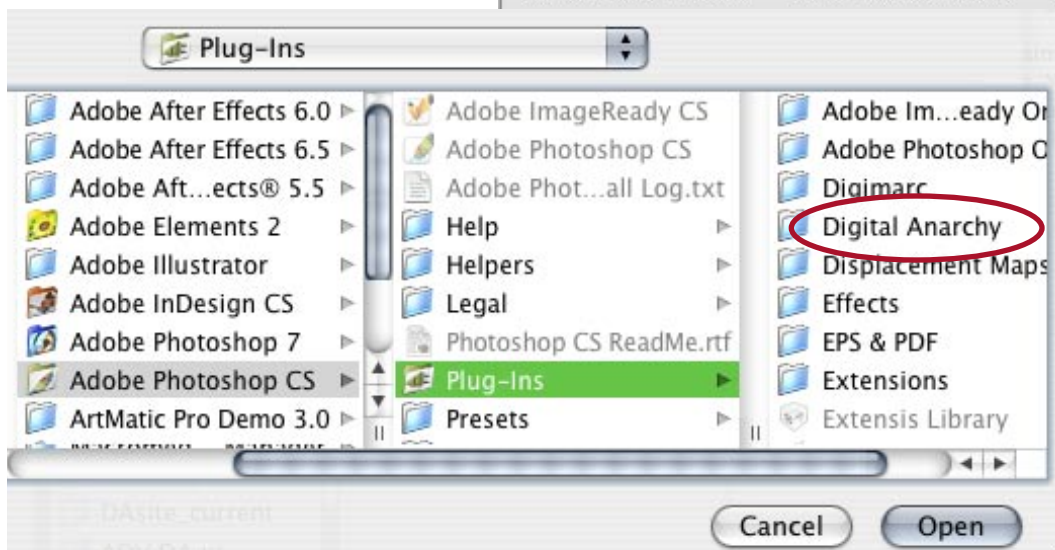


Light Factory  
Installer.pkg

### Steps to install

To install, double-click the Knoll 3.0.dmg to mount the volume to your hard drive. Go into the mounted disk image. Double-click the 'Knoll 3.0 installer.pkg'.

You need to designate both the drive to install to AND the install location. Choose the 'Plug-ins' folder for your version of Photoshop when prompted to do so.



The path should be something like this:  
[Hard Drive/Applications/Adobe Photoshop/Plugins](#)

Installing will create a 'Digital Anarchy' folder inside the Plugins folder, with a plugin file inside.

## Enter your OS password

During installation, you will be prompted to enter a password in an Authenticate screen. This is your User Account password for the operating system. It is not the Serial Number that you were sent upon purchase.

Please type in your User Name (if needed) and User Password to complete the installation.



## Installation: Windows

Knoll Light Factory 3.0 is supported in Windows 2000, XP Pro, XP Home and Vista 32-bit. Knoll 3.0 works in Adobe Photoshop 5.5 +higher, including Photoshop CS3. It is also compatible with Photoshop Elements 2.0 +higher, including Elements 5.0. The product should work in Vista 64-bit, but we do not provide support for that system at this time.

### Steps to install

To install, double-click the 'Knoll Light Factory.exe' file. Launch the installer and click the 'Next' button through the License Agreement. Click 'Next' until you get to the 'Locate Destination' screen. The installer needs you to point to your Photoshop Plugins directory.

The Plugins directory is inside your Photoshop application folder. Click on 'Browse' and navigate to Adobe Photoshop directory on your hard drive. Select the 'Plug-ins' folder. Click 'Next'.

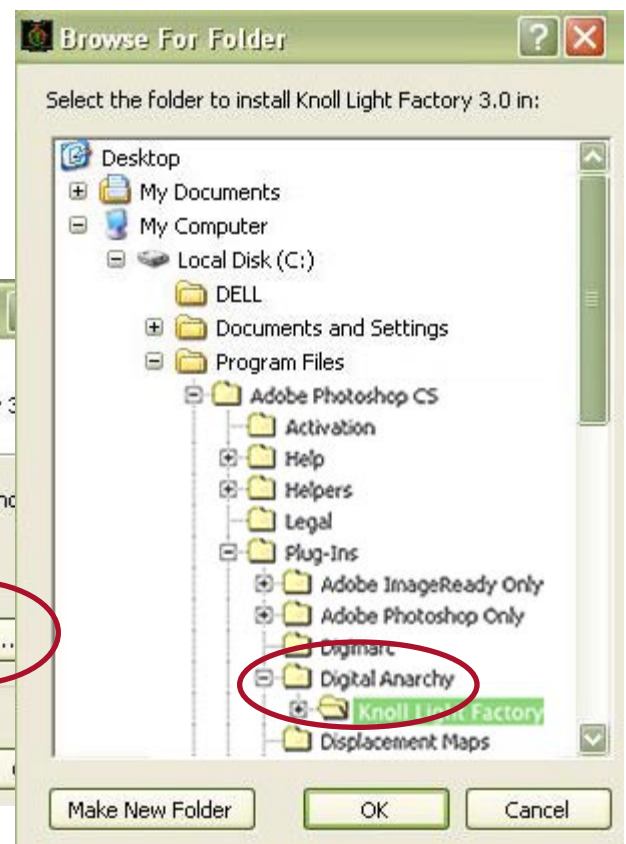
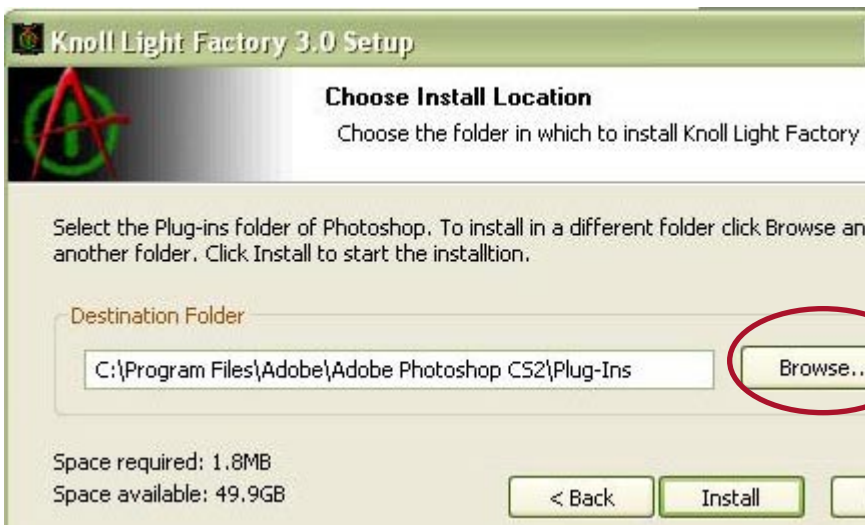
The directory path looks something like this: [C:/Program Files/Adobe/Photoshop/Plugins](#)

**NOTE:** This is important. You need to specifically choose the 'Plug-ins' folder as your destination, or Primatte may not work correctly. Do NOT install to your desktop, then drag over the file.

You are ready to install. The installer will show a screen informing you of this. Click the 'Next' button to begin installation.



Knoll Light Factory 3.0.exe



## Using demo or purchase

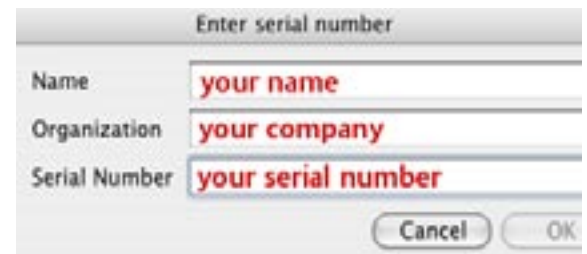
If you are using Knoll 3.0 in demo mode, you will see a watermark through your photographs. Except for that crosshatch, the demo of Knoll 3.0 will work exactly the same as the purchased version.

## Activate your purchase

If you have purchased Knoll Light Factory 3.0, you can unlock the demo by entering your Serial Number and purchase information. Otherwise, the product will remain watermarked.

To activate, choose the Digital Anarchy> Knoll Light Factory filter for your Photoshop> Filter menu. A dialog box will appear. This dialog box asks for your Name, Organization, and Serial Number.

If you have purchased the product, we sent you an email with this information. This info is case sensitive and very specific. Please enter the info exactly as we've written it out.



## Install to multiple apps or machines

You can install Knoll 3.0 as many times as needed on the same computer, to multiple versions of Photoshop or Elements on that computer. For each version of the host app, you will need to perform a separate installation of Primate to that application's 'Plug-ins' folder.

To install Knoll 3.0 on more than one computer, you will need to purchase additional licenses. Please contact Digital Anarchy for information about discounted rates on 2+ machines or site licensing.

## Where the filter is located

The Knoll Light Factory filter is accessed through a Digital Anarchy sub-menu in the Photoshop Filters menu. Make sure the image you are working on is open and the correct layer is selected.

## Support & Registration

Registration occurs when you purchase the filter. We register you in our database using the contact information you supplied upon purchase, and the serial number we've given you. If you need a serial number, installer, or any other material support, just contact [sales@digitalanarchy.com](mailto:sales@digitalanarchy.com).

We hope that you find Knoll Light Factory 3.0 gives you all the control you could want, while simple enough that you can set everything up in a few minutes. It's our desire to make sure you're satisfied with your purchase. If you have any questions, comments, or whatever, we'd love to hear them. Send an email to [info@digitalanarchy.com](mailto:info@digitalanarchy.com).

If you're having trouble with Knoll 3.0, please make sure to go through the intro video tutorials available at [www.digitalanarchy.com/knollPS/knollPS\\_tutes.html](http://www.digitalanarchy.com/knollPS/knollPS_tutes.html).

