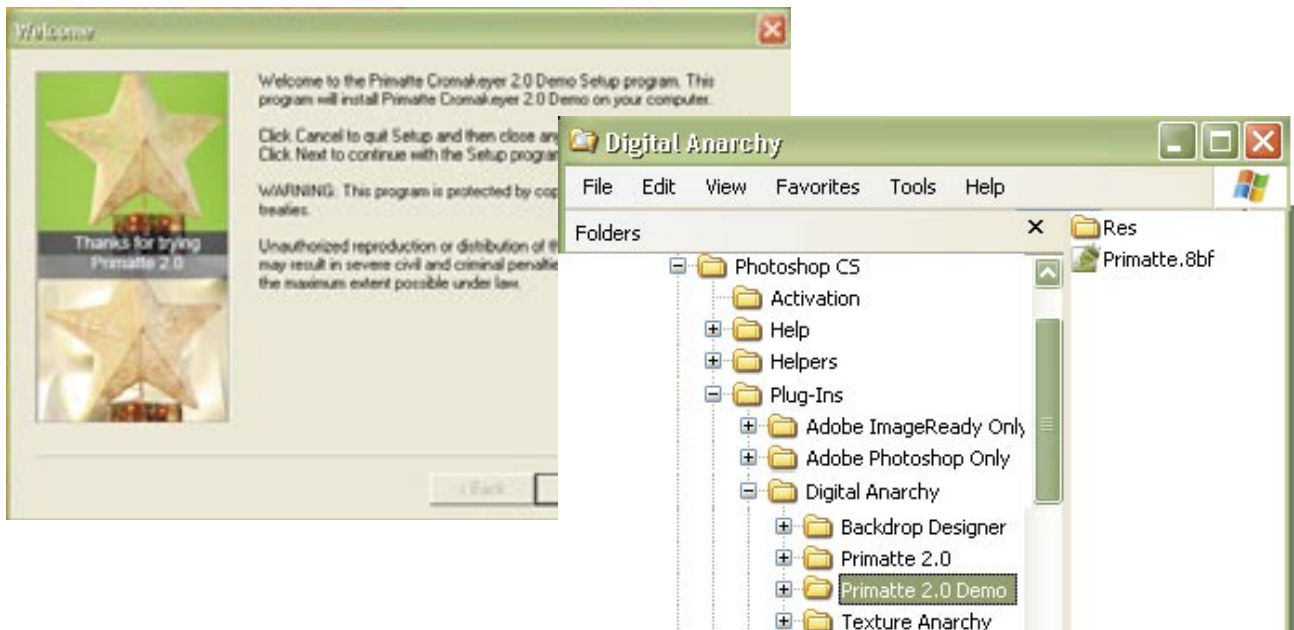


install a Photoshop demo for Windows

A basic step-by-step to install your product demo on a Windows computer.



please note : This installation guide uses the Primatte Chromakey plugin as an example. However, the instructions relate to all Photoshop plugins from Digital Anarchy.



[from Digital Anarchy]
f/x tools for revolutionaries.



To install your demo, you will first decompress the installation file. Then you will run the installer, click a few buttons, and designate the location for the demo files to go. After a quick registration, you're ready to try out the plugin!

01- unzip the file

If you downloaded the installer, it was delivered to you in a .ZIP file. You will first need to uncompress the file.

A .ZIP file is a file that holds another file, like a tupperware container for digital files. It compresses the file, which makes delivery across the internet easier. [figure 1]



[figure 1]

Typically, you can double-click the .ZIP file to extract the installer. Your computer should open a separate window that contains a .EXE file.

Please note: If you received the demo file on a CD, the installer file is NOT compressed. Therefore, you can skip to Step 02.

02- open the .EXE installer

The .EXE file is the 'executable' file that you will use to install the plugin. Its file type is 'Application'. [figure 2]



[figure 2]

Now double-click the installer file to launch it. The next steps explain what you do inside the installer.



03- welcome screen(s)

The first (and maybe second) screen simply welcomes you to the product installer. Isn't that nice? Just click the 'Next' button to continue. [figure 3]



[figure 3]

04- license agreement

The following screen shows our License Agreement. Click the 'Yes' button to accept the terms of use. If you don't accept the License, the installer will not continue! [figure 4]



[figure 4]

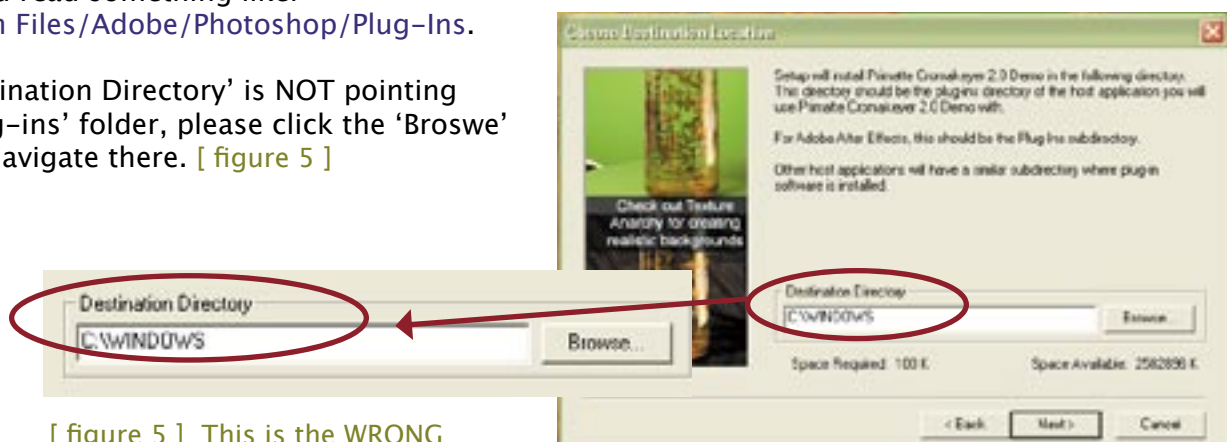
05- check the destination

You need to install the demo file into the Photoshop 'Plug-ins' folder on your hard drive. This allows Photoshop to see the plugin.

Sometimes the installer will automatically locate the correct directly. But not always. This may happen because you have more than one version of Photoshop on your computer (like Photoshop CS and PS Elements 3.0). Or the Windows OS simply doesn't know where to look.

You should always check the install path that is designated in the 'Destination Directory'. That path should read something like: C:/Program Files/Adobe/Photoshop/Plug-Ins.

If the 'Destination Directory' is NOT pointing to the 'Plug-ins' folder, please click the 'Browse' button to navigate there. [figure 5]



[figure 5] This is the WRONG installation path for the plugin.



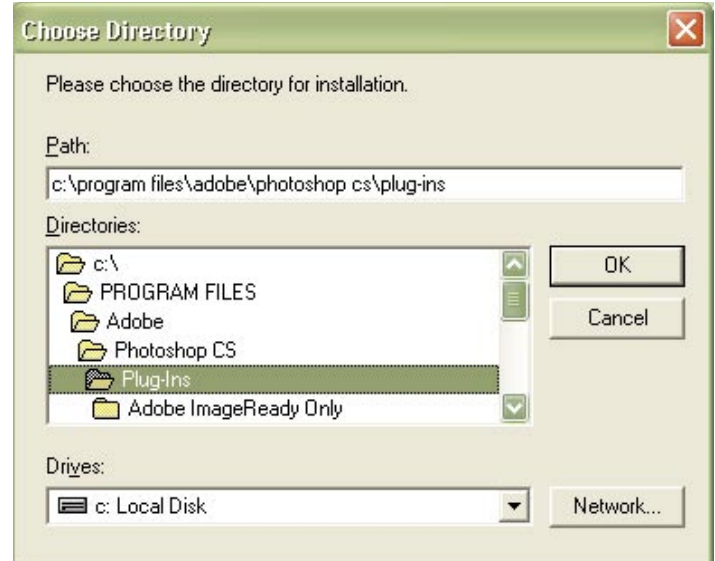
06- navigate to 'plug-ins' folder

Clicking the 'Browse' button will open a dialog box. You will need to navigate to the 'Plug-ins' folder of the version of Photoshop that you want to install to. [figure 6]

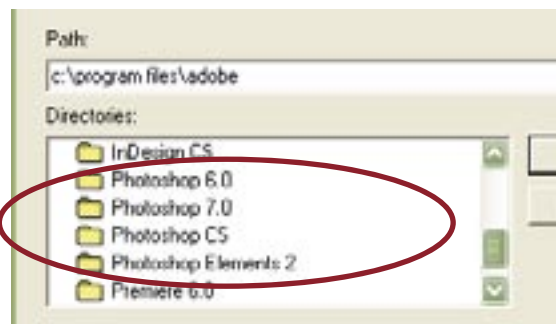
The correct path will read something like:
C:/Program Files/Adobe/Photoshop/Plug-Ins

Here are the steps that you MAY need to take to find the correct directory:

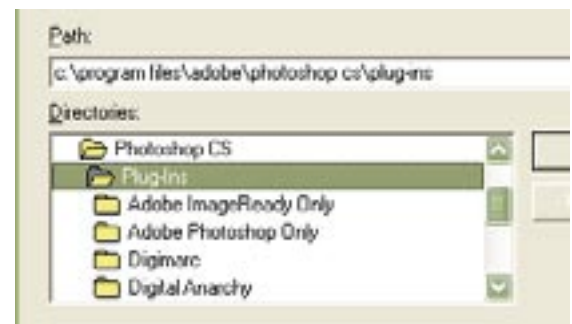
1. Double-click on the C:\ drive. This opens your main hard drive.
2. Double-click on the 'Program Files' directory to open it. This is NOT the same as your 'Program' directory.
3. Double-click on the 'Adobe' directory to open it.
4. Double-click on the Photoshop version that you want to install to. [figure 7]
5. Double-click on the 'Plug-ins' directory to open it. You do NOT need to go beyond this directory. If you are in Photoshop, do NOT choose the 'Adobe Photoshop Only' directory. [figure 8]



[figure 6] This is the correct installation path.



[figure 7] We have different versions of Photoshop that we can install into.



[figure 8] The 'Plug-ins' folder is the directory to install into.

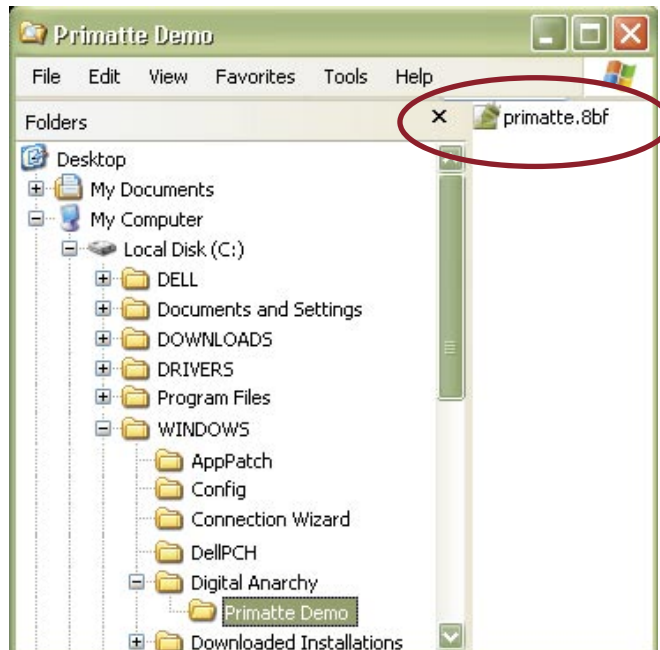
Click 'Ok' to choose that directory, and go back to the main window of the installer.

Please note: You cannot install the plugin into two Photoshop application folders at the same time. If you plan to install into multiple versions of Photoshop, you will need to run the installer multiple times.

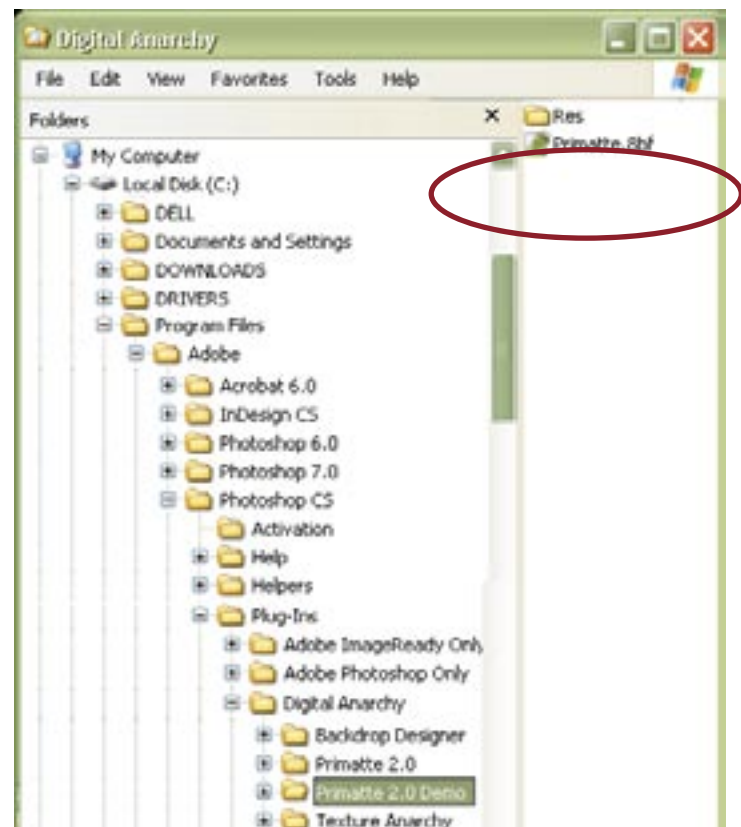


07- troubleshoot the location

If you don't navigate to the correct directory, you will install in a location that Photoshop can't read. However, you can't simply drag the files from an incorrect location to the 'Plug-ins' folder. This is because it may be that not all of the plugin files were installed on your hard drive.



[figure 9] This is an incorrect installation with missing files.



[figure 10] This is a correct installation with all files present.

For instance, by default, the installer will sometimes point to the 'WINDOWS' folder on your C: drive. That is the wrong location, and in the example shown here, only half of the files have been installed. [figure 9]

Notice that in the correct installation, there is an additional folder in the product demo folder. [figure 10]

Please note: If you install to the wrong location, you will need to throw those files into the Recycle Bin. Then begin the install process again.



08- click to install

Back in the main installer window, your install location will tell you that it has enough info to run the installer. Great! Click the 'Next' button. [figure 11]



[figure 11]

09- register message

As the installer runs, a 'Register' message will appear. You will be asked to register the use of this demo. We use your info to help us figure out who is using our product, and in what countries. [figure 12]



[figure 12]

When you click 'Ok' you will be taken to a page on our www.digitalanachy.com website. Our Register page is a very quick form. We appreciate your assistance!

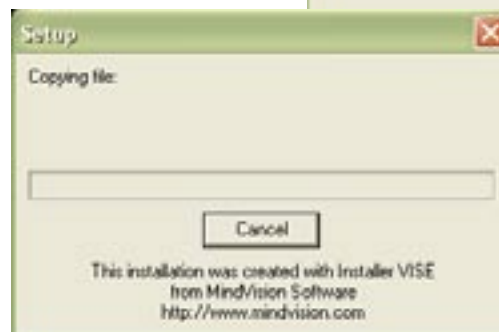
09b- register error

You will receive an error message during the registration process if you are on a computer that's not online. [figure 13]



[figure 13]

Just click the 'OK' button. Your browser will close and the installation will still be successful. You'll probably see a Setup window and a progress bar. [figure 14]



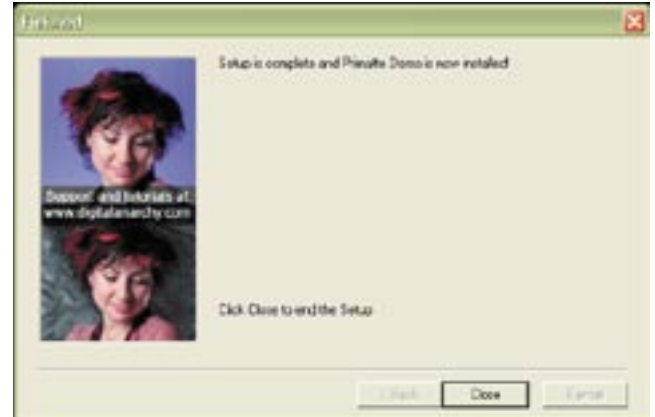
[figure 14]



10- close the installer

When installation is complete, the installer will let you know. Just click the 'Close' button to leave the installer. [figure 15]

If you were planning to install the plugins to another version of Photoshop, then double-click the .EXE file to run the installer again.



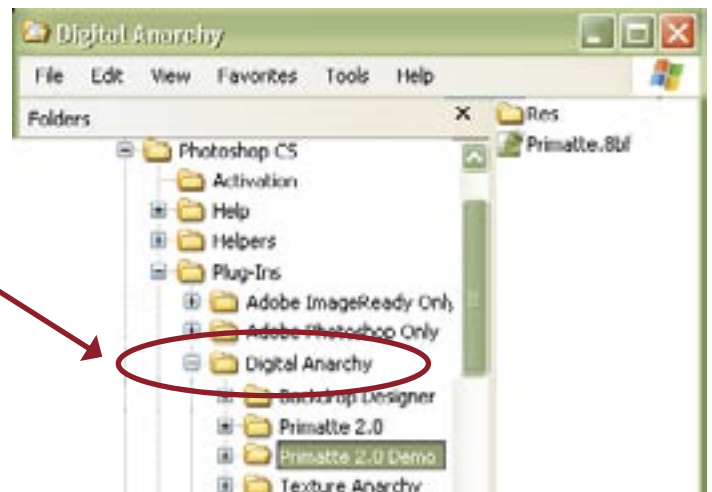
[figure 15]

12- where are the plugin files?

If you want to check where the plugins went, look on your hard drive in the Photoshop 'Plug-ins' folder. [figure 16]

Notice that a directory called 'Digital Anarchy' (that's our company!) has been created inside the 'Plug-ins' folder. The demo files are installed inside that directory.

If you are having difficulty with the installation, please contact us at info@digitalanarchy.com or sales@digitalanarchy.com.

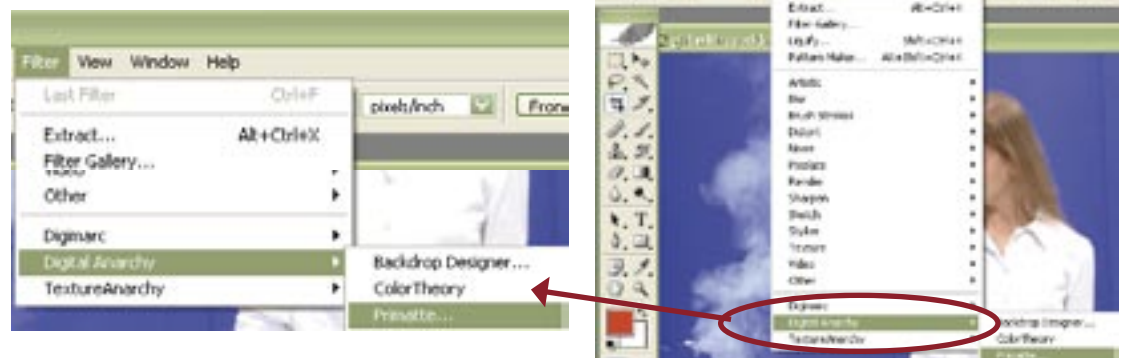


[figure 16]

13- where are they in photoshop?

When you launch Photoshop or Photoshop Elements, you will find our plugins in the Filter menu, in a Digital Anarchy submenu. [figure 17]

[figure 17]
Our plugins are accessed through the Photoshop> Filter> Digital Anarchy menu.

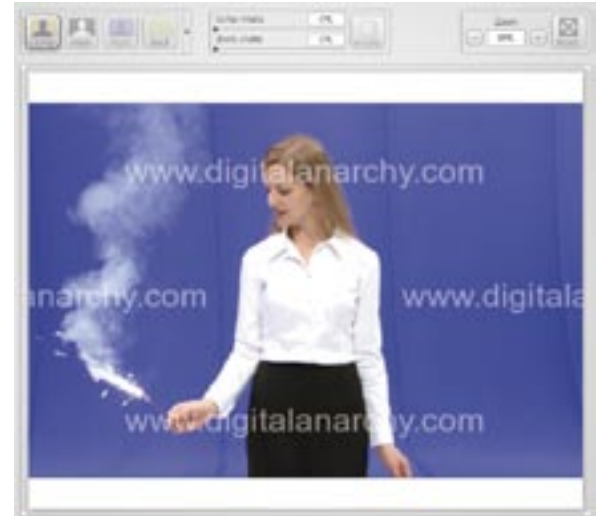




14- how does the demo work?

The product demo is fully functional and non-expiring. Every tool and action that you can take in the purchased version are present in the trial version. This allows you to completely evaluate a Digital Anarchy product before you buy it.

However, the image you work on will be watermarked. This means that a big red 'X' or our company name will stamped across the final output, making the imagery unusable. [figure 18]



[figure 18]